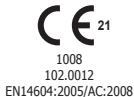




Photoelectric Smoke Alarm with Hush User Guide

Model: 2030-DSR

- Smoke Alarm Hush Control
- Small Structure Design



SMOKE ALARM

P/N: 2030-7201-00

Thank You for Purchasing this Kidde Alarm

Teach children how to respond to the alarm and that they should never play with the unit. This alarm was designed specifically for use in a residential environment. It is not designed for use in a recreational vehicle (RV) or boat.

Note: Please thoroughly read this user guide and save the document for future reference and to pass on to any subsequent owner.

IMPORTANT: Additional markings can be found on the back of the unit.

ENVIRONMENTAL PROTECTION

Waste electrical products or equivalent should not be disposed of with household waste. Please recycle where facilities exist. Check with Local Authority or Supplier for recycling advice.



Product Support: 0800 917 0722

Please write down the below information and have this at hand when you call.

Date Code (on back): _____

Date of Purchase: _____

Where Purchased: _____

Date to Replace: _____

CONTENTS OF THIS USER GUIDE

1. Smoke Alarm: What To Do When the Alarm Sounds.....	4
2. Introduction, Product Features and Specifications.....	5
3. Other Alarm Visual and Audible Indicators.....	6
4. Troubleshooting Guide.....	7
5. Limitations of Smoke Alarms.....	8
6. Recommended Locations for Smoke Alarms.....	9
7. Locations To Avoid.....	13
8. Installation Instructions.....	14
9. Operation and Testing.....	17
10. Hush Control Feature.....	18
11. Battery.....	19
12. Cleaning Your Alarm.....	20
13. Good Safety Habits.....	21
14. Service and Warranty.....	23

1. Smoke Alarm: What To Do When the Alarm Sounds

Smoke alarm pattern is three long beeps, a 1.5 second pause, and three long beeps repeating. The red LED blinks in time with alarm pattern.

- Alert small children in the home as well as anyone else that might have difficulty recognizing the importance of the alarm sounding or that might have difficulty leaving the area without help.
- Leave immediately by your escape plan. Every second counts, so don't waste time getting dressed or picking up valuables.
- While leaving, don't open any inside door without first feeling its surface. If hot, or if you see smoke seeping through cracks, don't open that door! Instead, use your alternate exit. If the inside of the door is cool, place your shoulder against it, open it slightly and be ready to slam it shut if heat and smoke rush in.
- If the escape route requires you to go through smoke, stay close to the floor where the air is cleaner. Crawl if necessary, and breathe shallowly through a cloth, wet if possible.
- Once outside, go to your selected meeting place and make sure everyone is there.
- Call the fire brigade from your mobile phone outside, or from your neighbour's home-not from yours!
- Don't return to your home until the fire officials say that it is all right to do so.

NOTE: See Section RECOGNIZING NUISANCE ALARMS, for nuisance alarm situations.

2. Introduction, Product Features and Specifications

Introduction

This alarm detects products of combustion using photoelectric technology.

Ten (10) years after the unit was installed, this unit will automatically alert you that it is time to replace the unit. This is called “End of Unit Life” mode. See Troubleshooting Guide. To help track the life of your alarm, write the installation date in the space provided on the side of the alarm.

Product Features and Specifications:

- Temperature Operating Range: 0°C to 40°C
- Humidity Operating Range: up to 93% relative humidity (RH), non-condensing
- Audible Alarm: 85+ dB(A) at 3 m, 3.0 to 3.5 KHz pulsing alarm
- Smoke Sensor: Photoelectric
- Smoke Alarm Hush Control
- Powered by 9V battery
- Storage and Transport Conditions: -20°C to +60°C, 5-95% RH (non-condensing)

3. Other Alarm Visual and Audible Indicators

Operational Mode	Visual Indications	Audible Indications	Action/Note:
Normal (standby)	Red LED blinks every 60 sec.		
Test (button press when no alarm condition is present)	<ul style="list-style-type: none">• 3 patterns of Red.• Test: Red LED blinks in sync with beep pattern.	<ul style="list-style-type: none">• Button press sound• 3 long beeps	Perform button press once a week to verify proper alarm operation.
Smoke Alarm Memory (unit has experienced a smoke alarm event within the last hour)	Red LED blinks every 15 sec.	None.	Push button to clear Alarm Memory.
Smoke Alarm Hush Mode	Red LED blinks every 2 sec.	After button push, Smoke alarm pattern stops	This feature is to be used only when a known alarm condition, such as smoke from cooking, activates the alarm.

4. Troubleshooting Guide

Trouble Condition	Visual Indications	Audible Indications	Action:
Low Battery	Red LED blinks every 30 sec.	Chirp every 60 sec.	<ul style="list-style-type: none">* Push button once to silence for 24 hrs.* Replace battery as soon as possible.
End of Unit Life	Red LED blinks 2 times every 30 sec.	2 chirps every 30 sec	<ul style="list-style-type: none">* Push button once to silence for 24 hrs. (Push button again to clear Hush.) Note: 7 days after End of Unit Life begins, the chirps cannot be silenced.* Remove, dispose unit, and replace as soon as possible.
Memory Fault	Red LED blinks 3 times every 30 sec.	Chirp every 30 sec.	<ul style="list-style-type: none">* Contact Product Support.
MCU Failure	None.	Constant tone.	<ul style="list-style-type: none">* Replace alarm.* Contact Product Support.
Stuck Button	Red LED blinks every 4 sec.	Chirp every 4 sec.	<ul style="list-style-type: none">* Push button to dislodge it from being stuck. If button cannot be released, please contact product support.
Fault Mode	Red LED blinks 4 times every 30 sec.	Chirp every 30 sec.	<ul style="list-style-type: none">* See Cleaning Your Alarm section.* Push button once to attempt to reset the unit.* Red LED will give an error code of 4 blinks when button is pushed/released once. Report the number of blinks to customer service if needed.

5. Limitations of Smoke Alarms

⚠ Warning: please read carefully and thoroughly

Life safety from fire in residential occupancies is based primarily on early notification to occupants of the need to escape, followed by the appropriate egress actions by those occupants.

- Fire warning systems for dwelling units are capable of protecting about half of the occupants in potentially fatal fires. An alarm may not be effective in some situations, such as during incendiary fires where the fire grows so rapidly that an occupant's egress is blocked even with properly located alarms, or when victims are intimate with the fire (for example, when a person's clothes catch fire while cooking), too old or young, or physically or mentally impaired such that they cannot escape even when warned early enough that escape should be possible. For these people, additional strategies such as protection-in-place or assisted escape or rescue are necessary.
- There are situations where a smoke alarm may not be effective to protect against fire. For instance:
 - a) smoking in bed
 - b) leaving children home alone
 - c) cleaning with flammable liquids, such as petrol
- A battery powered alarm must have a battery of the specified type, in good condition and installed properly.
- Smoke alarms must be tested regularly to make sure the battery and the alarm circuits are in good operating condition.
- Smoke alarms cannot provide an alarm if smoke does not reach the alarm. Therefore, smoke alarms may not sense fires starting in chimneys, walls, on roofs, on the other side of a closed door or on a different floor.
- If the alarm is located outside the bedroom or on a different floor, it may not wake up a sound sleeper.
- The use of alcohol or drugs may also impair one's ability to hear the smoke alarm. For maximum protection, a smoke alarm should be installed in each sleeping area on every level of a home.
- Although smoke alarms can help save lives by providing an early warning of a fire, they are not a substitute for an insurance policy. Home owners and renters should have adequate insurance to protect their lives and property.

6. Recommended Locations for Smoke Alarms

NOTE: According to BS 5839-6, for optimal fire protection: "The greatest benefit to life safety is given by a full-coverage system. Such a system will give the earliest practicable warning of fire to occupants, wherever ignition occurs."

- Locate the first alarm in the immediate area of the bedrooms. Try to monitor the escape routes and rooms opening into escape routes as the bedrooms are usually farthest from the exit.
- If more than one sleeping area exists, locate additional alarms near each sleeping area. No bedroom door should be further than 3 m from the nearest alarm.
- Locate additional alarms between every bedroom and every other room in the dwelling (for example, an office, library, or lounge), other than a toilet, bathroom, or shower room.
- Locate additional alarms to monitor any stairway as stairways act like chimneys for smoke and heat.
- Locate at least one alarm on every floor level, including finished lofts. Locate an alarm between each staircase and every room, other than a toilet, bathroom or shower room.
- Locate an alarm in every bedroom.
- Locate an alarm in every room where electrical appliances are operated (i.e. portable heaters or humidifiers).
- Locate an alarm in every room where someone sleeps with the door closed. The closed door may prevent an alarm not located in that room from waking the sleeper.
- Locate one alarm in each principal habitable room.
- If a habitable room is an inner room with no doors or windows through which escape is possible, locate one alarm in the room used to access that inner room.

- In hallways, corridors, or rooms exceeding 7.5 m in length, no point within the hallway, corridor, or room should exceed 7.5 m from the nearest alarm.
- Smoke, heat, and combustion products rise to the ceiling and spread horizontally. Mounting the smoke alarm on the ceiling in the center of the room places it closest to all points in the room. Ceiling mounting is preferred in ordinary residential construction.
- When mounting an alarm on the ceiling, locate it at a minimum of 300 mm from the side wall or light fitting. **(Figure 6-A)**
- Where structural beams create an obstacle to flow of smoke across a ceiling: If the beam is less than 600 mm in depth, install an alarm on the underside of the beam. Otherwise, install an alarm both sides of the beam, but no closer than twice the depth of the beam, or 500 mm, whichever is less.
- When mounting the alarm on the wall, use an inside wall with the top edge of the alarm at a minimum of at a minimum of 150 mm below the ceiling, and the bottom edge of the alarm within 300 mm below the ceiling. **(Figure 6-A)** The bottom of the alarm should also be above the level of any door opening.
- Install alarms in positions that are reasonably accessible for maintenance.
- Install Smoke Alarms on sloped, peaked or cathedral ceilings within 600 mm of the highest point (measured vertically). **(Figure 6-C)**
- Install smoke alarms on the ceiling of tray-shaped ceilings, or within 300 mm of the ceiling. **(Figure 6-D)**

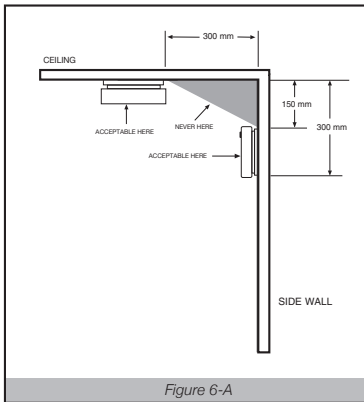


Figure 6-A

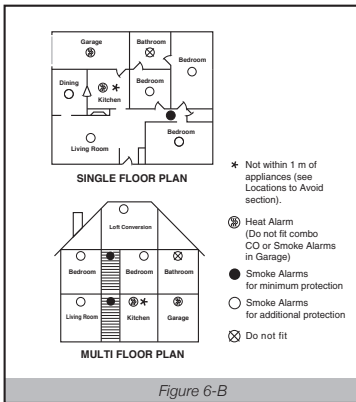
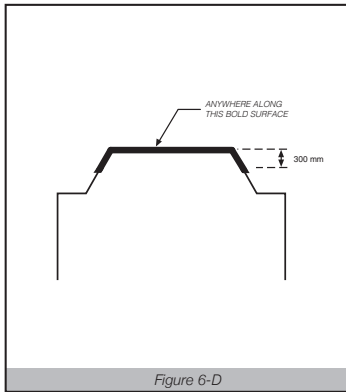
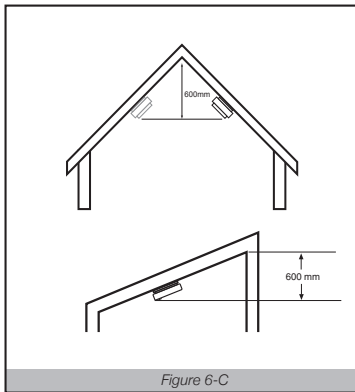


Figure 6-B



7. Locations To Avoid

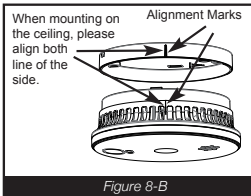
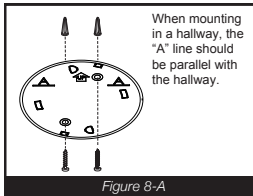
- In the garage. Products of combustion are present when you start your motor vehicle.
- Do not install smoke alarms on the walls if the room or hallway exceeds 10 m in both length and breadth, or exceeds an area of 50 m².
- Do not install alarms adjacent to, or directly above, heaters or air-conditioning vents.
- In very humid areas (above 90% RH, non-condensing), such as bathrooms and shower rooms. Do not install directly above a sink, or near dishwashers or washing machines. Moisture or steam can cause nuisance alarms.
- Normal cooking may cause nuisance alarms. If a kitchen alarm is desired, it should be an interconnected heat alarm.
- Do not install within 2 m of heating or cooking appliances, measured horizontally.
- Do not install outside of the dimensional guidelines given in Figures 6-A, 6-C, and 6-D.
- In an area where the temperature may fall below 0 ° C or rise above 40 ° C such as garages and unfinished attics.
- Do not install smoke alarms in dusty areas. Dust particles may cause nuisance alarm or failure to alarm.
- In insect-infested areas.
- Within 300 mm of a light fitting, as electronic "noise" generated by the electronics may cause nuisance alarms.
- Do not install in an enclosed space (cupboard) or where the ventilation openings in the unit could be impeded by items such as newspapers, table-cloths, furniture, curtains, etc.
- Do not install next to a door, window, extractor fan, flue, chimney, or any other area where high air flow may occur or the unit may be directly exposed to weather.
- Do not install in locations that are difficult or dangerous to reach for testing or maintenance.
- Do not install DC (battery only) alarms on top of AC electrical junction boxes.



WARNING: To reduce the risk of fire or electric shock, do not expose this product to rain or moisture. 13

8. Installation Instructions

Kidde alarms are not designed, agency tested or certified for recessed mounting and should not be installed in this manner. Recessed mounting impedes smoke entry into the smoke chamber, which may prevent the alarm from sounding in a timely manner. This could endanger the lives of occupants in the residence. Kidde alarms are designed, tested and certified for wall (if applicable) and ceiling surface mount only. Without agency research, we have no fire test data to support that alarms will perform as required when installed in a recessed manner. Accordingly, we do not recommend, approve or advise mounting Kidde alarms in recessed configurations.



This apparatus should be installed by a competent individual.

⚠ CAUTION: This unit is sealed. The cover is not removable.

After selecting the proper smoke alarm location as described in Section 4, attach the mounting bracket to the ceiling as shown in **Figure 8-A**. Use the screws and anchors provided to secure the mounting bracket (Use 5mm drill bit for anchors).

⚠ CAUTION! If the battery compartment is empty, the unit will not attach to the mounting bracket.

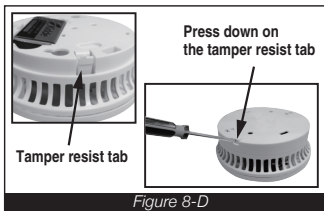
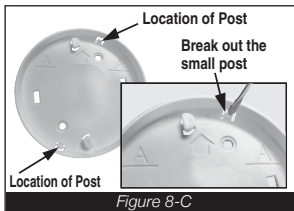
Please installing the battery at first. Alignment marks are provided on the edge of the mounting bracket and the alarm. Place the alarm on the mounting bracket with the alignment marks lined up(**Figure 8-B**) and rotate the alarm clockwise (as indicated on the alarm cover) until the alarm snaps into place.

After installation/activation, test your alarm as described in Operation and Testing section.

Smoke Alarm Tamper Resist Feature

This alarm is equipped with a tamper resist feature that helps prevent someone from removing the unit from the mounting bracket. When activated, it can be very effective in preventing smoke alarm removal or tampering. Activate the smoke alarm tamper resist feature by breaking out both small posts in the square hole in the mounting bracket (see **Figure 8-C**). When the post is broken off, the tamper resist on the base is allowed to engage the mounting bracket. Rotate the alarm onto the mounting bracket until you hear the tamper resist tab snap into place, locking the alarm on the mounting bracket. Using the tamper resist feature will help deter children and others from removing the alarm from the bracket.

NOTE: To remove the alarm when the tamper resist tab is engaged, press down on the tamper resist tab and rotate the alarm in the direction indicated by the arrows on the cover of the alarm (see **Figure 8-D**).



9.Operation, Testing and Smoke Alarm Memory

Operation: The smoke alarm is operating once a fresh battery is installed and testing is complete. When products of combustion are sensed, the unit sounds a loud 85dB pulsating alarm until the air is cleared. See section Smoke Alarm: What To Do When the Alarm Sounds.

Testing: Test by pushing the button on the cover and holding it down for a minimum of 2 seconds. This will sound the alarm if the electronic circuitry, horn and battery are working. If no alarm sounds, the unit has a defective battery or other failure.

Test the alarm weekly to ensure proper operation.

Never use an open flame or combustible materials to test your alarm, you could damage the alarm or ignite nearby materials and start a structure fire.

Smoke Alarm Memory: Alerts you if the unit has experienced a smoke alarm event while you were away, and then the smoke has cleared. See section Other Alarm Visual and Audible Indicators.

NOTE: If at any time your alarm fails to operate correctly (erratic or low sound, for example), contact Kidde Safety (see page 2 for contact details).

10. Hush Control Feature

The Hush feature is extremely useful in a kitchen area or other areas prone to nuisance alarms. The Hush feature has the capability of temporarily desensitizing the smoke alarm circuit for about 9 minutes. This feature should only be used when a known alarm condition, such as smoke from cooking, activates the alarm. If the alarm does sound, check for fires first. If a fire is discovered, get out and call the fire department. If no fire is present, check to see if one of the reasons listed in Locations to Avoid may have caused the alarm. The smoke alarm is desensitized by pushing the button on the smoke alarm cover. The alarm will silence immediately for approximately 9 minutes and the red LED will blink every 2 seconds. This indicates that the alarm is in a temporarily desensitized condition. The smoke alarm will automatically reset after approximately 9 minutes. If after this period particles of combustion are still present, the alarm will sound again. The Hush feature can be used repeatedly until the air has been cleared of the condition causing the alarm.

If there is any question as to the cause of an alarm, it should be assumed that the alarm is due to an actual fire and the dwelling should be evacuated immediately.

⚠ CAUTION: Before using the alarm smart hush feature. Identify the source of the smoke and be certain a safe condition exists.

Chirping:

When End of Unit Life or Low Battery chirping begins, you can temporarily silence these chirps by pressing the Hush button. See Troubleshooting Guide.

11. Battery

⚠ WARNING: Alarm will not attach to mounting bracket unless battery is installed.

Removal of battery will render the unit inoperative.

To replace the battery, remove the alarm from the mounting bracket by rotating the alarm in the direction of the "OFF" arrow on the cover.

The Smoke Alarm is powered by a 9V battery. A fresh battery should last for one year under normal operating conditions.

Low Battery

This alarm has a low battery monitor circuit which will cause the alarm to "chirp" and flash the red LED for a minimum of 30 days when the battery gets low (see Troubleshooting Guide). Replace the battery when this condition occurs, and test the unit after battery is replaced.

Use only the following 9 volt batteries for smoke alarm replacement:

Carbon Zinc Type: GOLD PEAK 1604P or 1604S
Alkaline Type: ENERGIZER 522, GOLD PEAK 1604A;
DURACELL MN1604, MX1604;

NOTE: Do not use lithium batteries in this unit.

NOTE: Weekly testing is required.

⚠ WARNING! Use only the batteries specified. Use of different batteries may have a detrimental effect on the smoke alarm.


NOTE: Constant exposures to extreme temperatures or humidity may reduce battery life.

12. Cleaning Your Alarm

Your Alarm Should be Cleaned at Least Once a Year

You can clean the interior of your alarm (sensing chamber) by using compressed air or a vacuum cleaner hose and blowing or vacuuming through the openings around the perimeter of the alarm. The outside of the alarm can be wiped with a damp cloth. Use only water to dampen the cloth, use of detergents or cleaners could damage the alarm.

- Never use detergent or other solvents to clean the unit.
- Avoid spraying air freshener, hair spray, or other aerosols near the alarm.
- Do not paint the unit. Paint will seal the vents and interfere with the sensor's ability to detect smoke.
- Never attempt to disassemble the unit to clean inside. This action will void your warranty.

 **WARNING:** Reinstall the Alarm as soon as possible to ensure continuous protection.

Smoke Chamber Monitoring (Fault Mode)

The smoke alarm constantly monitors the condition of the smoke chamber. If the alarm detects a build up of dust and contaminants in the smoke chamber, it will chirp and flash the LED every 30 seconds. See section Troubleshooting Guide, Fault Mode. This indicates the smoke chamber requires maintenance and cleaning. The smoke alarm will operate as normal in an event of a fire. However, the chance of a false alarm is high. If after cleaning the smoke alarm the condition persists, replace the smoke alarm.

13. Good Safety Habits

Develop and Practice a Plan of Escape

Prepare and practice a home escape plan twice a year, including drills at night. Know two ways out of every room (door & window) and identify a meeting place outside the home where everyone will gather once they have exited the residence. When two people have reached the meeting place, one should leave to call 999 or 112 while the second person stays to account for additional family members. Establish a rule that once you're out, you never re-enter under any circumstance!

Make a floor plan indicating all doors and windows and at least two (2) escape routes from each room. Second story windows may need a rope or chain ladder.

Have a family meeting and discuss your escape plan, showing everyone what to do in case of fire and where to meet after they leave the house.

Ensure that small children hear the alarm and wake when it sounds. They must wake up in order to execute the escape plan. Practice allows all occupants to test your plan before an emergency. You may not be able to reach your children. It is important they know what to do.

Familiarize everyone with the sounds of the smoke alarm and train them to leave your home when they hear it.

Current studies have shown smoke alarms may not awaken all sleeping individuals, and that it is the responsibility of individuals in the household that are capable of assisting others to provide assistance to those who may not be awakened by the alarm sound, or to those who may be incapable of safely evacuating the area unassisted.

Smoke Detection – Are More Alarms Desirable?

The required number of smoke alarms might not provide reliable early warning protection for those areas separated by a door from the areas protected by the required smoke alarms. For this reason, it is recommended that the householder consider the use of additional smoke alarms for those areas for increased protection. The additional areas include the basement, bedrooms, dining room, utility room, and hallways not protected by the required smoke alarms. The installation of the smoke alarms in the kitchen, attic (or unfinished), or garage is normally not recommended, as these locations occasionally experience conditions that can result in improper operation.

14. SERVICE AND WARRANTY

THREE YEAR LIMITED WARRANTY

KIDDE SAFETY EUROPE LTD warrants to the original purchaser that the enclosed smoke alarm (but not the battery) will be free from defects in material and workmanship or design under normal use and service for a period of three years from the date of purchase. The obligation of KIDDE SAFETY EUROPE LTD under this warranty is limited to repairing or replacing the smoke alarm or any part which we find to be defective in material, workmanship or design (part replacement only, no installation), free of charge to the customer, upon sending the smoke alarm with proof of date of purchase, postage and return postage prepaid, to distributor: Warranty Service Department, Kidde Safety Europe Ltd, Ash House, Littleton Road, Ashford, TW15 1TZ, UK

This warranty shall not apply to the smoke alarm if it has been damaged, modified, abused or altered after the date of purchase or if it fails to operate due to improper maintenance or inadequate A.C. or D.C. electrical power.

THE LIABILITY OF KIDDE SAFETY EUROPE LTD OR ANY OF ITS PARENT OR SUBSIDIARY CORPORATIONS ARISING FROM THE SALE OF THIS SMOKE ALARM OR UNDER THE TERMS OF THIS LIMITED WARRANTY SHALL NOT IN ANY CASE EXCEED THE COST OF REPLACEMENT OF SMOKE ALARM AND, IN NO CASE, SHALL KIDDE SAFETY EUROPE LTD OR ANY OF ITS PARENT OR SUBSIDIARY CORPORATIONS BE LIABLE FOR CONSEQUENTIAL LOSS OR DAMAGES RESULTING FROM THE FAILURE OF THE SMOKE ALARM OR FOR BREACH OF THIS OR ANY OTHER WARRANTY, EXPRESS OR IMPLIED, EVEN IF THE LOSS OR DAMAGE IS CAUSED BY THE COMPANY'S NEGLIGENCE OR FAULT.

This warranty does not affect your statutory rights.



© 2021 Carrier All Rights Reserved.

QUESTIONS OR FOR MORE INFORMATION

Manufactured By:

Walter Kidde Portable Equipment Inc.

1016 Corporate Park Drive, Mebane, NC 27302, USA

Telephone: 0800 917 0722

www.kiddesafetyeurope.co.uk

Made in China

EU Authorised Representative

Carrier Fire & Security B.V.

Kelvinstraat 7

6003 DH Weert, NL