

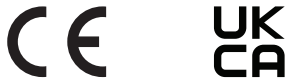


HEAT ALARM K3003 MANUAL

Commercial reference: 3003-015
Developed by CAVIUS

**PLEASE READ THE USER GUIDE
CAREFULLY BEFORE USE AND
RETAIN FOR FUTURE USE!**

This Thermal Heat Alarm is designed for areas not suitable for smoke alarms due to high risk of false alarms such as; kitchens, garages or workshops.



The CE mark affixed to this product confirms its compliance with the European Directives which apply to the product.

Tested to comply to the standard of system heat alarms EN54-5 class A1/R. Alarm condition aural signal pattern according to ISO 8201.

CAVIUS Aps assumes no responsibility for any errors, which may appear in this manual. Furthermore, CAVIUS Aps reserves the right to alter the hardware, software, and/or specifications detailed herein at any time without notice, and CAVIUS Aps does not make any commitment to update the information contained herein. All the trademarks listed herein are owned by their respective owners.
© 2022 Carrier. All Rights Reserved

Developed by CAVIUS Aps
Jens Juul Vej 28K, DK-8260
Distributed in UK & ROI by Kidde Safety Europe Ltd
Distributed in EU by Carrier B.V.
Manufactured in P.R.C. Designed in Denmark

SAFETY INSTRUCTIONS:
The device comes with a 3V lithium battery. Batteries are to be handled with care and battery powered devices should be kept out of reach of children. Do not try to recharge or burn the batteries.

TECHNICAL INFORMATION:
Type of alarm: Kidde heat alarm detects
1) rapidly increased temperature level
2) absolute heat level of 58 degrees C.

Alarm signal: The minimum sound level is 85dB at 3 meter.

Battery: Powered by a non-replaceable 3v CR123A Lithium battery with 10-year life (included).

IMPORTANT: Do not replace the battery. Replace the product if the battery fails.

Low battery indicator: A short acoustic "beep" will sound and the LED will flash every 48 seconds when the battery is near the end of its life. In this stage it will continue for minimum 30 days.

The heat alarm is not active unless it is inserted in the mounting base.

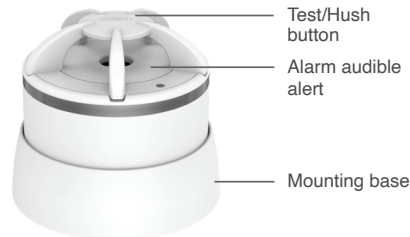
Diameter: 40mm Height: 40mm.

Placement: The heat alarm is designed to be installed on a ceiling or wall. Never install directly above an oven/hob/stove.

Alarm signal: The heat alarm has a visual and acoustic signal. In the passive state, the LED will flash every 48 seconds to indicate normal function. In alarm state the LED will speed up flash, and the alarm will emit a sweeping sound pattern design to alert occupants.

Hush function: In case of unintentional or false alarms, push button for 2 seconds. This will mute the alarm for 10 minutes, after which time the alarm will automatically resume its normal function.

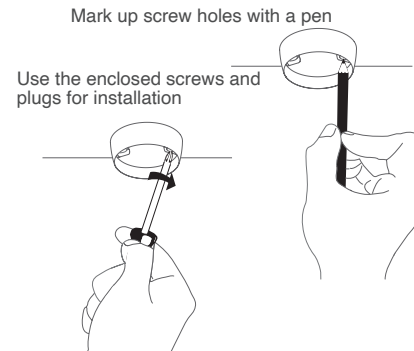
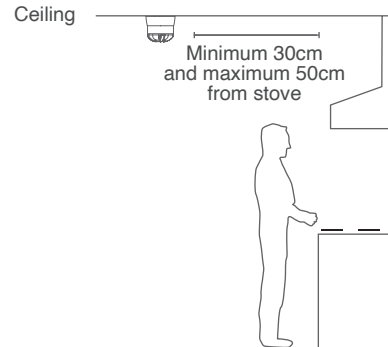
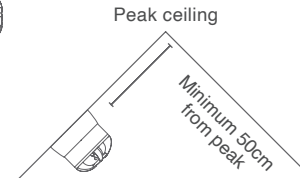
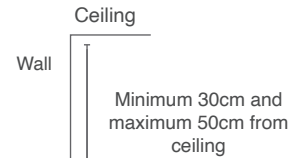
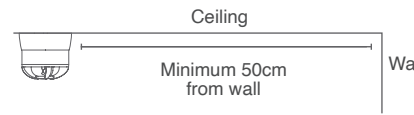
Maintenance: Test the heat alarm at least once per quarter, by pushing the test button. The heat alarm should give a loud alarm tone.



The best places to mount the alarm:

- Areas not suitable for smoke alarms due to high risk of false alarms
- Kitchen area
- Bathroom
- Garage or workshop

Additional alarms increase the security.



Installation of alarm:
1. Detach the alarm from the mounting base by twisting counter clockwise. Use the mounting base to mark the screw holes on the ceiling. Use the enclosed screws and plugs to install the mounting base. Once the mounting base is installed on ceiling or wall, attach the alarm by twisting clockwise.

2. After mounting, test the alarm by pushing the test button on the top and get a loud alarm tone.

Please note: The label in the product must not be removed as it contains important information regarding the product.

The alarm may NOT be placed:
• In rooms where the temperature goes outside -10°C to +50°C.

- Bedrooms
- Lounge
- Dining room
- Hallway
- Family room

NOTE: In areas where smoldering fires occur over flaming fires, photoelectric smoke alarms are still the best to be installed.

Fault finding: If the heat alarm activates without visible cause, then possible cause could be: You may have your heat alarm too close to the cooking hobs and stove. Try reinstalling slightly further away to alleviate any issues.

If the heat alarm does not work, when the test button is pushed, the probably cause is a faulty battery, and the heat alarm must be replaced.

Other information: Do not paint the alarm.

Disposal: For product, please dispose properly at end of life. This is electronic waste that should be recycled.

WARNING: All alarms should be assumed as due to actual fire and the dwelling should be evacuated immediately.

WARNING: To prevent injury, this apparatus must be securely attached to the ceiling/wall in accordance with the installation instructions.

WARNING: Batteries shall not be exposed to excessive heat such as direct sunshine, fire, or the like. Note the local country regulations regarding installation.

UK Product Support:
Kidde Safety Europe Ltd, Ash House, Littleton Road, Ashord, TW15 1TZ, UK
www.kiddesafetyeurope.co.uk
admin.kiddesafety@carrier.com
0800 917 0722